



# STELLAR WINE CELLAR

*Benefiting Orlando Science Center*

# Trivia rules:

- No phone or internet usage allowed. Honor system.
- Answers must be completed at the end of each round to ensure fairness.
- In the event of a tie, a tiebreaker will decide the round.

# **Wine in Pop Culture**



**I. Hannibal Lecter ate the liver of a census taker with some fava beans and a nice Chianti. Where in Italy is the Chianti region?**

- A. Veneto
- B. Tuscany
- C. Piedmont
- D. Capri



Still from *The Silence of the Lambs* (1991), Orion Pictures

## 2. Which rapper popularized Cristal in the 1990s?

- A. Jay-Z
- B. Ice Cube
- C. Snoop Dogg
- D. 2Pac





**3. True or false: the rock band KISS has their own wine label.**

- A. True
- B. False



**4. Disney/Pixar's *Ratatouille* brand wine couldn't be made because of marketing regulations. What was the planned wine?**

- A. Cabernet Sauvignon
- B. Sauvignon Blanc
- C. Bordeaux
- D. Chardonnay



Still from *Ratatouille* (2007), Buena Vista Pictures



## 5. Which wine themed color was Pantone's Color of the Year in 2009?

- A. Marsala
- B. Mimosa
- C. Pink Champagne
- D. Burgundy





## 6. What Pinot does Titus sing about in the Netflix series *Unbreakable Kimmy Schmidt*?

- A. Gris
- B. Blanc
- C. Noir
- D. Meunier



Promotional image from *Unbreakable Kimmy Schmidt* (2015-), Netflix

## 7. Which color category of wine does Linda Belcher of *Bob's Burgers* prefer?

- A. Reds
- B. Whites
- C. Pinks



Still from *Bob's Burgers* (2011-), FOX



## 8. The John Cleese series *Fawlty Towers* made which wine fault infamous?

- A. Lightstrike
- B. Heat damage
- C. Cork taint
- D. Ladybird taint



Promotional image from *Fawlty Towers* (1975 - 1979), BBC

**9. Which former Today Show host has been parodied on SNL for her love of wine?**

Write your answer down – no multiple choice!





**10. In The Office episode “Dinner Party”, Michael Scott describes the wine as having “sort of an \_\_\_\_\_ afterbirth”.**

- A. Earthy
- B. Oaky
- C. Umami
- D. Acid-y



Still from *The Office* (2005 - 2013), NBC

**Please wait while your host  
tallies the results.**



**I. Hannibal Lecter ate the liver of a census taker with some fava beans and a nice Chianti. Where in Italy is the Chianti region?**

B. Tuscany

**2. Which rapper popularized Cristal in the 1990s?**

A. Jay-Z



**3. True or false: the rock band KISS has their own wine label.**

**A. True**

**4. Disney/Pixar's Ratatouille brand wine couldn't be made because of marketing regulations. What was the planned wine?**

D. Chardonnay



## 5. Which wine themed color was Pantone's Color of the Year in 2009?

B. Mimosa

2009

**PANTONE®**  
**14-0848**  
**Mimosa**

**6. What Pinot does Titus sing about in the Netflix series *Unbreakable Kimmy Schmidt*?**

C. Noir



**7. Which color category of wine does Linda Belcher of *Bob's Burgers* prefer?**

A. Reds

## 8. The John Cleese series *Fawlty Towers* made which wine fault infamous?

C. Cork taint



Still from *Fawlty Towers* (1975 - 1979), BBC



**9. Which former Today Show host has been parodied on SNL for her love of wine?**

Kathie Lee Gifford



Still from *Saturday Night Live* (1975 -), NBC

**10. In The Office episode “Dinner Party”, Michael Scott describes the wine as having “sort of an \_\_\_\_\_ afterbirth”.**

B. Oaky



Still from *The Office* (2005 - 2013) with caption, NBC



**Tiebreaker: How many *Game of Thrones* branded wines are there?**

**Answer: 4**

# **Take a break before the next round!**

Have a chat, enjoy another glass of wine, or watch a video.



# **Wine Science**

**I. How many grapes does it take to produce one bottle of wine on average?**

- A. 200 - 400
- B. 400 - 600
- C. 600 - 800
- D. 800 - 1000





## 2. Which of the following was the earliest archaeological record of wine making?

- A. 7000 BCE, China
- B. 6000 BCE, Georgia
- C. 5000 BCE, Iran
- D. 4000 BCE, Sicily





**3. True or false: grapes need additives like sugar and yeast in order to ferment.**

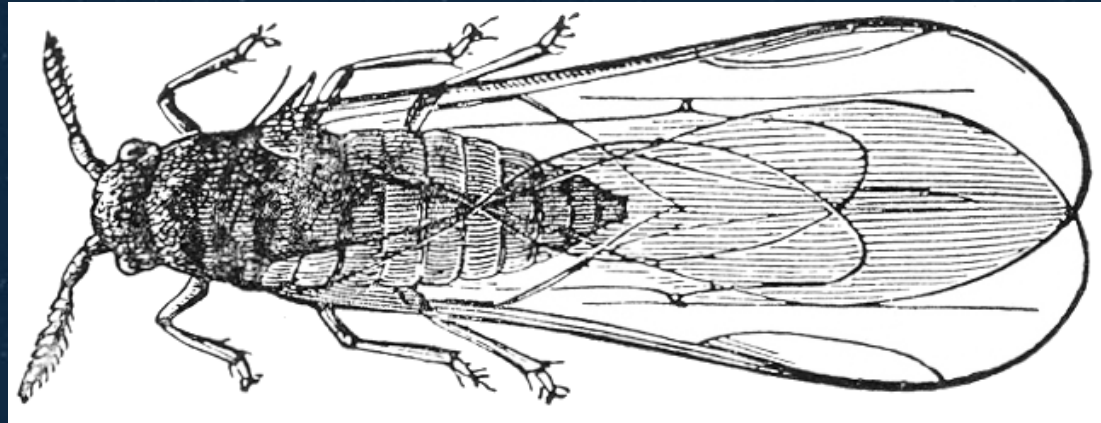
A. True

B. False



**4. Where did the pest *Phylloxera vastatrix*, which threatened all European grapevines, originate?**

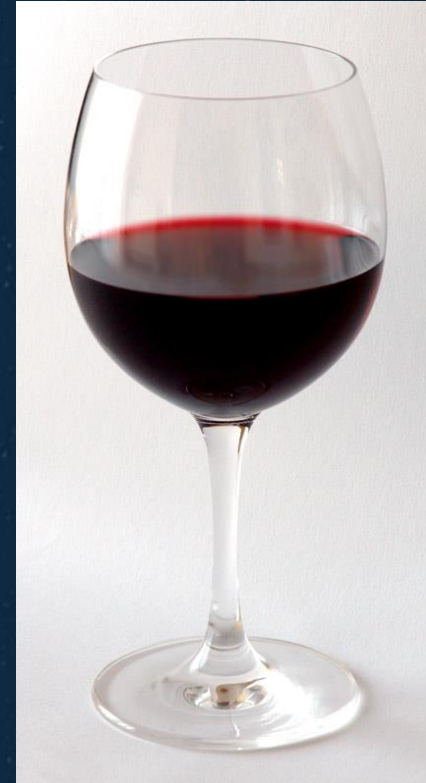
- A. Italy
- B. France
- C. United States
- D. United Kingdom





## 5. What percentage of wine is ethanol and water?

- A. 70
- B. 86
- C. 90
- D. 98





## 6. How many wine grape varieties are there in the world?

- A. About 5,000
- B. About 10,000
- C. About 20,000
- D. About 50,000



# 7. What can carbon isotope analysis tell researchers about wine?

- A. The barrels it was aged in
- B. The color of the grapes
- C. How long it was aged
- D. The pH





**8. Warmer climates produce more \_\_\_\_ wine.**

- A. Acidic
- B. Mild
- C. Robust
- D. Alcoholic





**9. Acetic acid gives wine its tartness. What other edible is made up of acetic acid?**

- A. Lemons
- B. Coffee
- C. Walnuts
- D. Vinegar



# 10. Which chemical compounds are responsible for a wine's aroma?

- A. Aldehydes
- B. Intermetallic compounds
- C. Halogens
- D. Lipids





**Please wait while your host  
tallies the results.**



**I. How many grapes does it take to produce one bottle of wine on average?**

C. 600 - 800

**2. Which of the following was the earliest archaeological record of wine making?**

A. 7000 BCE, China

Pottery found at the sites was used to make  
rice wine!

**2. True or false: grapes need additives like sugar and yeast in order to ferment.**

**B. False**

Grapes can ferment without any additives, but additives can speed up the process.



**4. Where did the pest *Phylloxera vastatrix*, which threatened all European grapevines, originate?**

C. United States

This little bug almost decimated the wine industry entirely. It destroyed most vineyards in Europe in the late 19<sup>th</sup> century.

## 5. What percentage of wine is ethanol and water?

D. 98

Only 2% of the wine gives it flavor. And if you think that's amazing, get this – all human DNA is 99.9% the same, meaning .01% makes us different!

That 2% is sounding a lot higher now, right?

**6. How many wine grape varieties are there in the world?**

**B. About 10,000**



## **7. What can carbon isotope analysis tell researchers about wine?**

A. The barrels it was aged in

Carbon isotope analysis is commonly used by anthropologists and paleontologists to determine the diet of humans and animals.

**8. Warmer climates produce more \_\_\_\_\_ wine.**

C. Robust

Warmer climates mean faster ripening grapes.



**9. Acetic acid gives wine its tartness. What other edible is made up of acetic acid?**

D. Vinegar

## **10. Which chemical compounds are responsible for a wine's aroma?**

A. Aldehydes

Aldehydes make up a lot of smells – cinnamon, vanilla, and cardamom to name a few.

**Please wait while your host  
tallies the results.**



**Tiebreaker: How many wineries are there  
in Florida?**

**Answer: 35**

# **Take a break before the next round!**

Have a chat, enjoy another glass of wine, or watch a video.



# **Wine Mythology**

**I. In Persian legend, one of the King's wives discovered wine by accident. Which wine is named from this legend?**

- A. Nebbiolo
- B. Shiraz
- C. Malbec
- D. Gamay





**2. In Egyptian mythology, Osiris taught humans to make wine from vineyards cultivated by his wife, the goddess of agriculture. What was her name?**

- A. Bastet
- B. Hathor
- C. Ma'at
- D. Isis





**3. Which constellation, in the Central Florida sky this time of year, is connected to the Roman god of wine, Bacchus?**

- A. Corona Borealis
- B. Lyra, the Harp
- C. Cassiopeia
- D. Aquila, the Eagle



## 4. What is Bacchus's Greek name?

- A. Dionysus
- B. Pentheus
- C. Agave
- D. Telemachus





**5. Corvus, a constellation visible this time of year, is a myth surrounding a crow with a terrible punishment. He was cursed to always be what?**

- A. Thirsty
- B. Hungry
- C. Drunk
- D. Tired





**6. The writer Nonnus attributed Bacchus with introducing which country to wine?**

- A. Egypt
- B. Persia
- C. India
- D. Judea



## 7. The Norse god Aegir was famous for what amazing party item?

- A. Fountains of wine
- B. Cups that refilled themselves when empty
- C. Golden plates
- D. Wine from Earth





## 8. Why did ancient Egyptian pharaohs not drink wine?

- A. They didn't want to be drunk
- B. They thought it was the blood of the dead
- C. They thought beer was more high class
- D. They thought wine was for women





**9. In which country's myth was a king drowned in wine?**

- A. China
- B. Japan
- C. Scotland
- D. France



## **10. In ancient Rome, which animals were considered hazardous to vineyards?**

- A. Cows
- B. Chickens
- C. Pigs
- D. Sheep



**Please wait while your host  
tallies the results.**



**I. In Persian legend, one of the King's wives discovered wine by accident. Which wine is named from this legend?**

**B. Shiraz**

**2. In Egyptian mythology, Osiris taught humans to make wine from vineyards cultivated by his wife, the goddess of agriculture. What was her name?**

D. Isis

**3. Which constellation, in the Central Florida sky this time of year, is connected to the Roman god of wine, Bacchus?**

A. Corona Borealis



**4. What is Bacchus's Greek name?**

A. Dionysus

**5. Corvus, a constellation visible this time of year, is a myth surrounding a crow with a terrible punishment. He was cursed to always be what?**

A. Thirsty

**6. The writer Nonnus attributed Bacchus with introducing which country to wine?**

C. India



**7. The Norse god Aegir was famous for what amazing party item?**

B. Cups that refilled themselves when empty

## **8. Why did ancient Egyptian pharaohs not drink wine?**

**B. They thought it was the blood of the dead**

**9. In which country's myth was a king drowned in wine?**

A. China



**10. In ancient Rome, which animals were considered hazardous to vineyards?**

C. Pigs

**Tiebreaker: In an effort to revitalize Pompeii's wine cellars, a limited amount of Villa dei Misteri was created and bottled in 2001. How many bottles were made?**



**Answer: 1721**



# **Take a break before the next round!**

Have a chat, enjoy another glass of wine, or watch a video.

# TV & Movie Wine Quotes

**I. Who said, “I drank all the throwing wine”?**

- A. Lucille Bluth (*Arrested Development*)
- B. Jenna Maroney (*30 Rock*)
- C. Jan Levinson (*The Office*)
- D. Robin Scherbatsky (*How I Met Your Mother*)



**2. Which vampre said, “Look at me! I’m drinking wine and eating chicken”?**

- A. Vladislav (*What We Do In The Shadows*, 2014)
- B. Odette (*Transylvania 6-5000*, 1985)
- C. Dracula (*Dracula: Dead and Loving It*, 1995)
- D. Barnabas Collins (*Dark Shadows*, 2012)

**3. Who said, “Wow, the red pairs nicely with the white”?**

- A. Marge Simpson (*The Simpsons*)
- B. Peter Griffin (*Family Guy*)
- C. Bender (*Futurama*)
- D. Bob Belcher (*Bob’s Burgers*)

**4. Which Meg Ryan character said, “It’s a bold wine with a hint of sophistication and lacking in pretense. Actually, I was just talking about myself”?**

- A. Kate (*French Kiss*, 1995)
- B. Sally Albright (*When Harry Met Sally*, 1989)
- C. Kathleen Kelly (*You’ve Got Mail*, 1998)
- D. Annie Reed (*Sleepless in Seattle*, 1993)



**5. Who said, “I think we can agree that all wine tastes the same and if you spend any more than 5 dollars on wine, you are very stupid”?**

- A. Gina Linetti (*Brooklyn 99*)
- B. April Ludgate (*Parks and Recreation*)
- C. Hank Hill (*King of the Hill*)
- D. Eleanor Shellstrop (*The Good Place*)

**6. Which Steve Martin character said, “Sparkling Moscatel, one of the finest wines from Idaho”?**

- A. Waiter (*The Muppet Movie*, 1979)
- B. Freddy Benson (*Dirty Rotten Scoundrels*, 1998)
- C. Neal Page (*Planes, Trains, and Automobiles*, 1987)
- D. Inspector Clouseau (*The Pink Panther*, 2006)

**7. Who said, “I’m going to Europe and I’m going to have a marvelous time! I’m going to get up at 10 and have two glasses of wine at lunch every single day”?**

- A. Emily Gilmore (Gilmore Girls)
- B. Leslie Knope (Parks and Recreation)
- C. Carrie Bradshaw (Sex and the City)
- D. Diane Chambers (Cheers)



**8. Who said, “Everything’s better with some wine in the belly”?**

- A. Violet Crawley (*Downton Abbey*)
- B. Tyrion Lannister (*Game of Thrones*)
- C. Xena (*Xena: Warrior Princess*)
- D. Galavant (*Galavant*)

**9. Which James Bond said, “Red wine with fish. Well, that should have told me something”?**

- A. Daniel Craig (*Casino Royale*, 2006)
- B. Sean Connery (*From Russia With Love*, 1963)
- C. Roger Moore (*Live and Let Die*, 1973)
- D. Pierce Brosnan (*Golden Eye*, 1995)

**10. Who said, "You're telling me that wine is better than Pepsi? No way wine is better than Pepsi"?**

- A. Martin Crane (*Frasier*)
- B. George Costanza (*Seinfeld*)
- C. Joey Tribbiani (*Friends*)
- D. Frank Barone (*Everybody Loves Raymond*)



**Please wait while your host  
tallies the results.**

**I. Who said, “I drank all the throwing wine”?**

**B. Jenna Maroney (30 Rock)**



Still with caption from 30 Rock (2006 - 2013), NBC

## 2. Which vampire said, “Look at me! I’m drinking wine and eating chicken”?

C. Dracula (*Dracula: Dead and Loving It*, 1995)



Still with caption from *Dracula: Dead & Loving It* (1995), Sony Pictures



### 3. Who said, “Wow, the red pairs nicely with the white”?

D. Bob Belcher (*Bob's Burgers*)



Still with caption from *Bob's Burgers* (2011-), FOX

**4. Which Meg Ryan character said, “It’s a bold wine with a hint of sophistication and lacking in pretense. Actually, I was just talking about myself”?**

A. Kate (*French Kiss*, 1995)

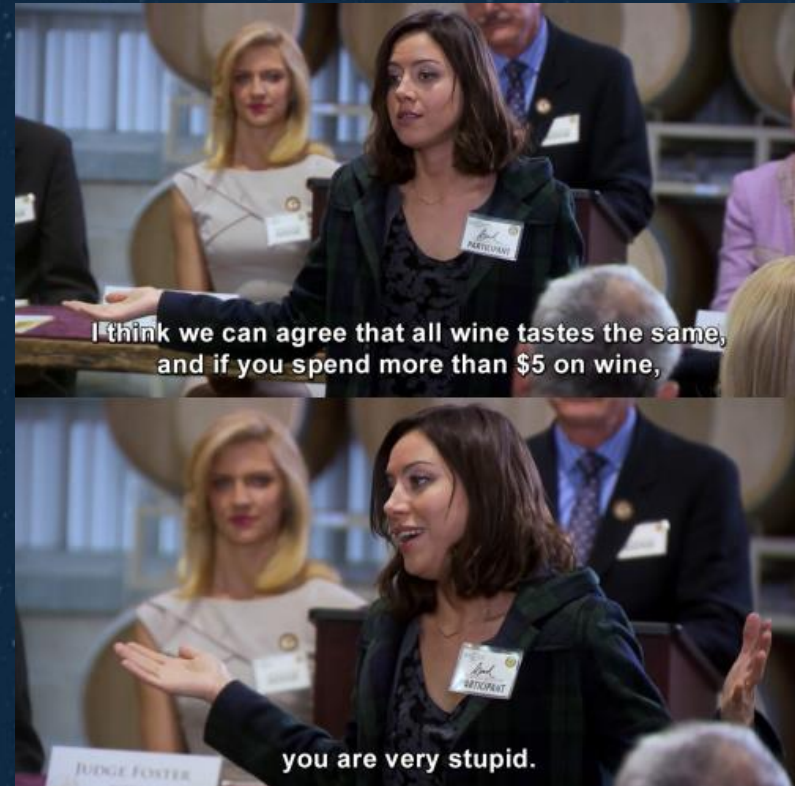


Still from *French Kiss* (1995), 20<sup>th</sup> Century Fox



**5. Who said, “I think we can agree that all wine tastes the same and if you spend any more than 5 dollars on wine, you are very stupid”?**

**B. April Ludgate (*Parks and Recreation*)**



Still with caption from *Parks & Recreation*  
(2009-2015), NBC



## 6. Which Steve Martin character said, “Sparkling Moscatel, one of the finest wines from Idaho”?

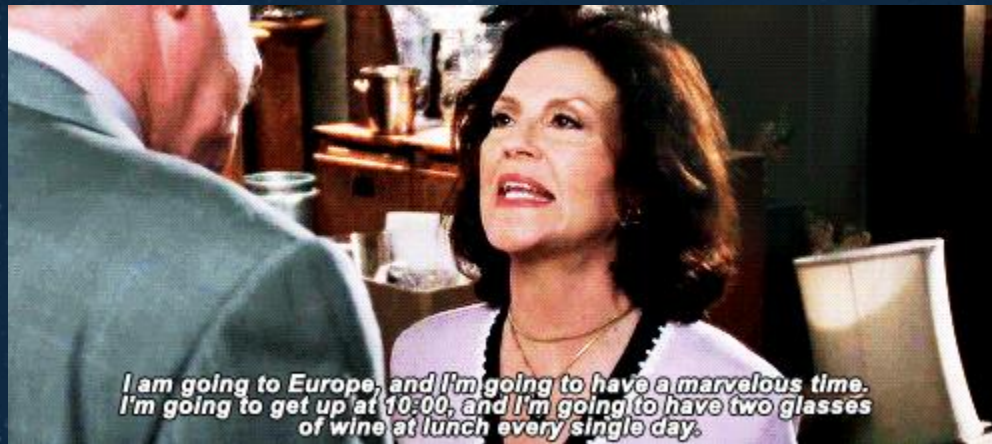
A. Waiter (*The Muppet Movie*, 1979)



Still from *The Muppet Movie* (1979), ITC Entertainment

**7. Who said, “I’m going to Europe and I’m going to have a marvelous time! I’m going to get up at 10 and have two glasses of wine at lunch every single day”?**

**A. Emily Gilmore (Gilmore Girls)**



Still with caption from *Gilmore Girls* (2000-2007), Warner Bros.



## 8. Who said, “Everything’s better with some wine in the belly”?

B. Tyrion Lannister (*Game of Thrones*)



Still with caption from *Game of Thrones*  
(2011 - 2019), HBO



**9. Which James Bond said, “Red wine with fish. Well, that should have told me something”?**

B. Sean Connery (*From Russia With Love*, 1963)



Still from *From Russia With Love* (1963),  
United Artists

# 10. Who said, "You're telling me that wine is better than Pepsi? No way wine is better than Pepsi"?

B. George Costanza (*Seinfeld*)



Still with caption from *Seinfeld* (1989 - 1998), Sony Pictures Television

**Tiebreaker: How many times is a member of House Lannister seen drinking wine on screen between seasons 1 - 4 of HBO's *Game of Thrones*?**



**Answer: 103**



# STELLAR WINE CELLAR

*Benefiting Orlando Science Center*